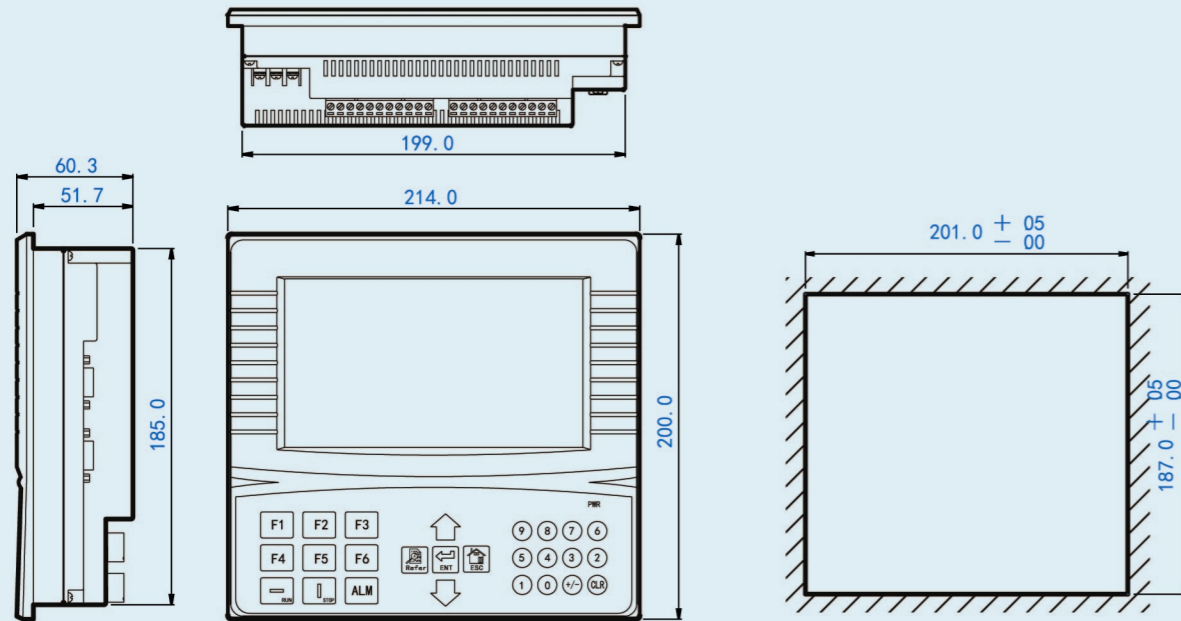


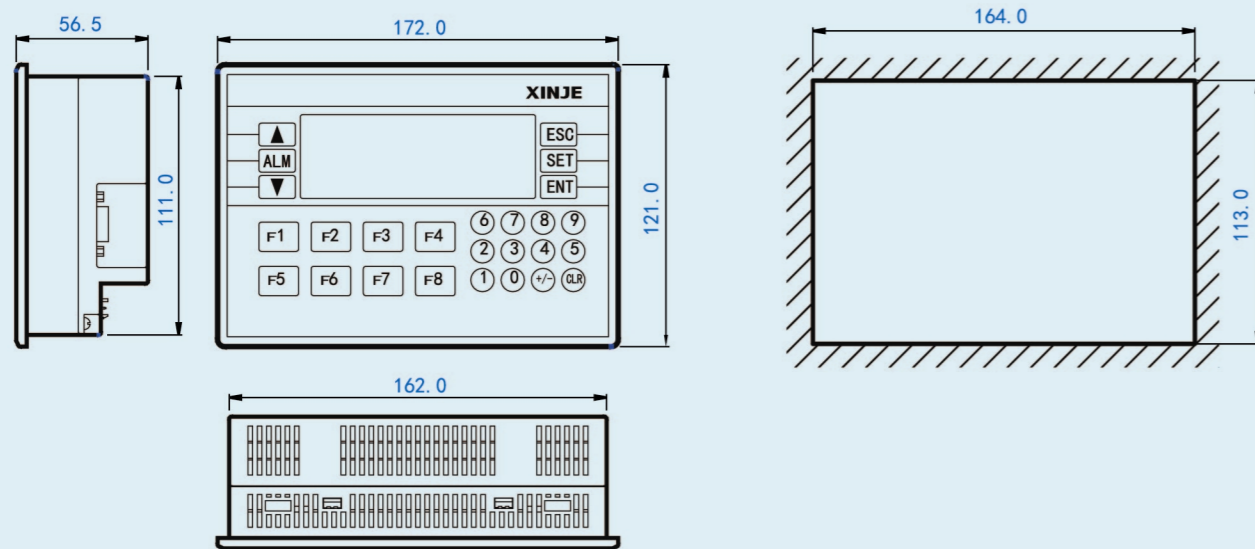
Appearance & Dimension

XMP2-32R/T-E

(Unit: mm)



XMP-18/XP-18



Integral Design, One Body Control Solution.

SCANTECH
automação industrial



Integral industrial controller XMP2-32R/T-E **series**
HMI+PLC combination XMP/XP

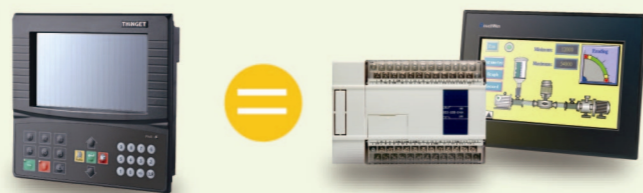
SCANTECH
automação industrial

Integral industrial controller XMP2-32R/T-E



Superior performance, full functions

- Combo of PLC and HMI, bring a whole new experience
 - XMP2-32R/T-E=XC2-32+MP760-T
 - Integrate logic control, analog input/output, HMI in one unit
 - Tangibly display area, supply more arbitrary control



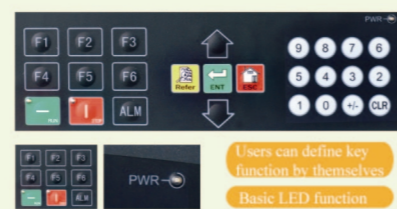
Integral design, exquisite combo of PLC and HMI, more human in structure

- More human in structure, save more installation space
 - Program port with multi-function design: HMI and PLC use the same program cable, no need to change repeatedly, just one cable in the whole process.
 - More compact structure, greatly save cabinet space



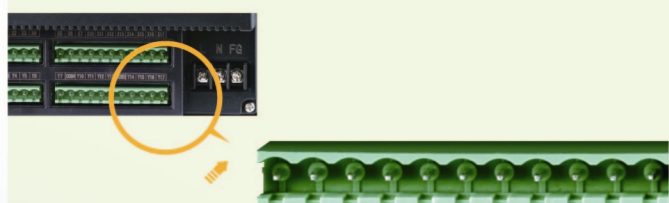
More genial, close to user's requirements

- Freely set key-press's functions, new added panel LED
 - 26 function key-press, freely set their functions, sensitive and precise
 - Added panel LED : Power LED, running LED, stop LED
 - In running process, user only needs to see LED to get current running information, simple and intuitionistic, convenient for remote checking.



Greatly simplified maintenance work

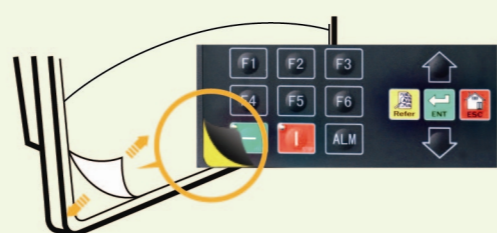
- Knock-down terminal structure



Waterproof rating accord with IP20

Satisfy users' various project requirements

- The film of key-press part can be changed optionally



Display part

- Vivid screen display and project gallery, support all TP functions

- 256 true color display panel, 7" big screen, display more content, with more fresh color
- Built-in 4MB FlashROM, 256KB SRAM, satisfy the demands of big project



Support multiple language input, including simplified and traditional Chinese, English, Japanese, Korean, etc. Richer text performance capacity, arbitrafont, size, with multiple artistic effect, make your display more vivid.



Support multiple parts display and setting, can place project flow figure via big screen, such as history trend figure, real time monitor figure, bar graph, alarm list, etc., can realize more intuitionistic control.

Control part

- Faster dispose speed, including all XC2 series elite

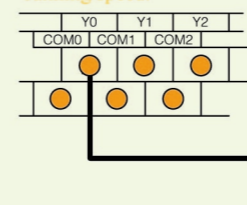
- As a result of using XC2 series PLC chip, make you taste inequable speed.



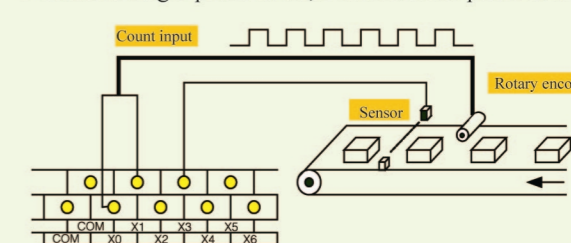
One time speed upgrade

XC3 XMP2

- Built-in 2-channel 400KHz pulse output function. (R type don't support)
- Through PLSF instruction, can freely control running speed.



- 32-bit high speed count function, with frequency can reach 80KHz
- 5 channels single-phase count, 2 channels AB phase count



Communication part

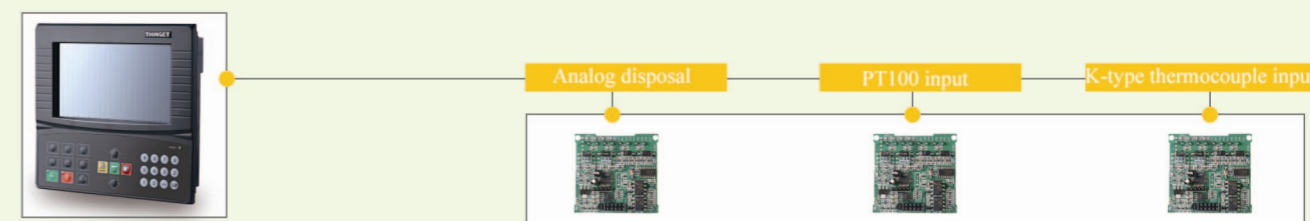
- Equip 2 communication ports, fleetly connect with various devices

- Equip dual ports (download port, communication port), each port can communicate independently
 - Download port : Can be used for HMI screen and PLC program download. Support RS-485 communication, connect with slave devices.
 - Communication port: Support PLC communicate with external device via RS-232/RS-485 communication port.
- Support Modbus-RTU communication
- Support HMI user-defined protocol compiling
- User can compile meter and other device communication protocol by themselves



Realize the control of temperature and analog (Developing)

- XMP2 can expand multiple BD board, but needn't extra space.



PLC&OP

Exquisite integrative controller

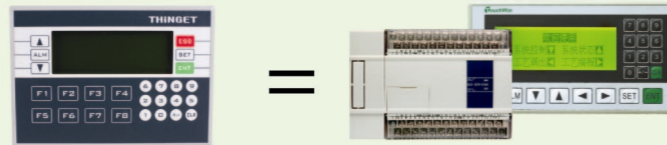
XMP-18/XP-18



Compact PLC+HMI model

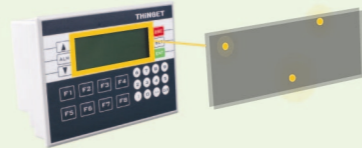
Perfect combination of XC3, XC2, XC1 series PLC and OP series operate panel

- Brief design, compact structure layout, save the install space greatly
- Integrate control, display, analog functions in one body, fulfill your project requirements in the round.



OP series operate panel, with touch function

The display area of XMP-18 support touch operation also, enlarged actual usable key-press number, more flexible operation.



PLC function

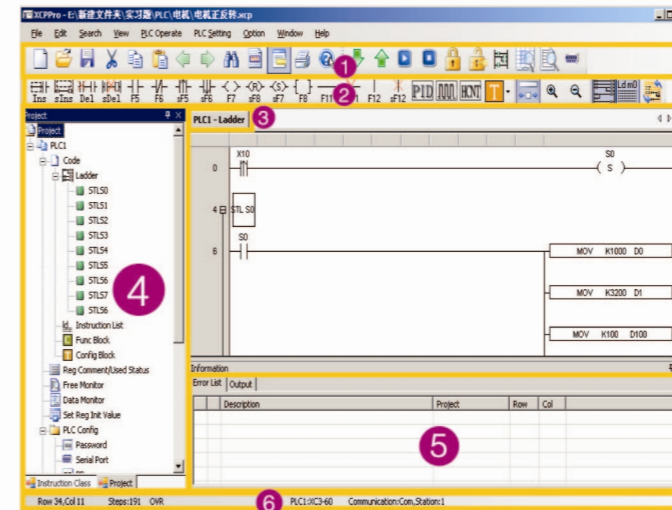
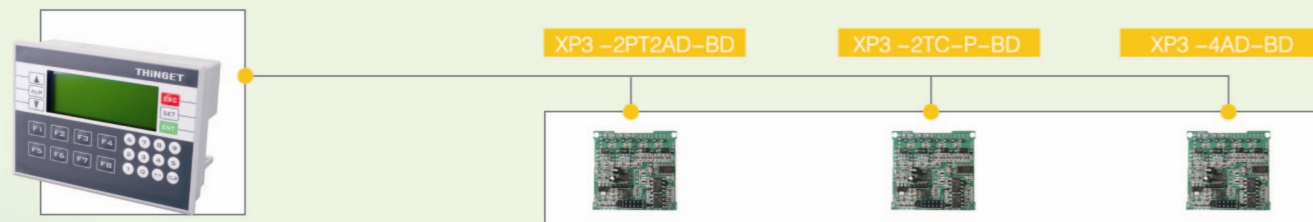
Faster dispose speed, including XC2 series' all functions

- Digital input 10 points, output 8points
- 2-channel high speed pulse output, the frequency can reach 400KHz, can realize multi-segment control
- 4-channel single-phase or 2-channel AB phase 32-bit high speed count function, the frequency can reach 80KHz.
- Program port dual function design: use one cable to realize both PLC program download and HMI screen download
- RS-485 communication port support MODBUS protocol and free format protocol
- Support PID control function, more precise and steady control

Analog dispose function

XMP/XP series can expand multiple analog temperature module, for extensive application

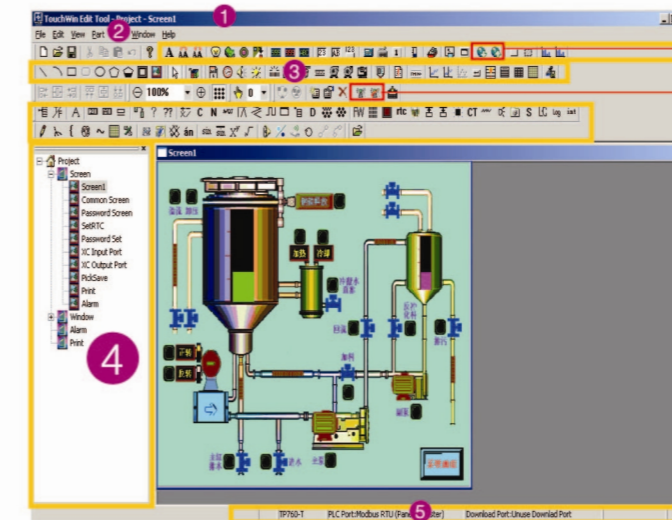
- Can equip multiple function BD board, to do relevant control of temperature and analog.
- Install in the main unit directly, do not need extra space.



A new generation edit tool XCP Pro

Human design, more closer to the users' edit environment demands

- Toolbar: can do basic project operation, such as upload/download, monitor, etc.
- Ladder chart edit panel, call directly
- Multiple active windows, can switch with each other, can also appoint the display area freely.
- Project bar and instruction bar can switch with each other
- Information bar: error and output information are clear in a glance
- Status bar: display the basic information of the project



TouchWin screen editing software

Rich function, intuitive and wieldy
Built-in multiple artistic effects and parts

- Toolbar: supply rich letters, gallery and button tool
- Part and picture
- Advanced function toolbar: can realize various functions, such as logic operation, command, etc.
- Project bar: display all pictures and windows
- Status bar: display current basic information

Online/offline simulating Upload/download recipe



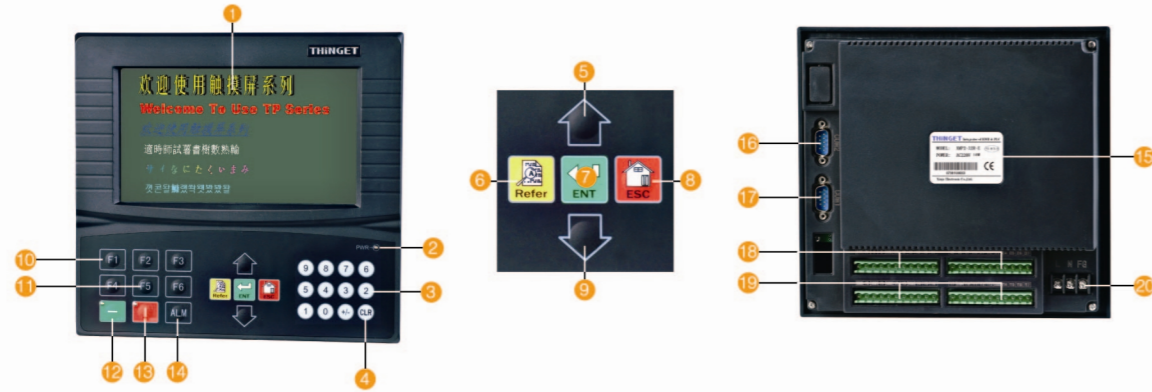
OP20 screen editing software

Friendly interface, simple operation, easy to get familiar.

- Set alarm list
- Basic parts area: can place word, button, bar graph, etc.
- Touch key: realize panel touch function.
- Basic screen bar: show all the current screen and description, can new create and delete.
- Screen property and parameter setting area: set key function and parameter value

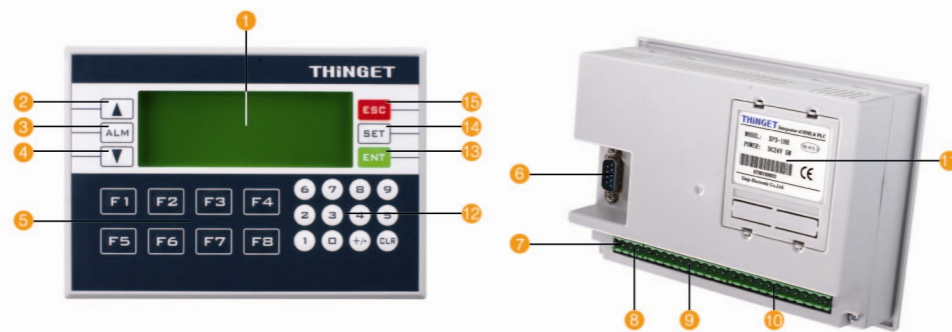
Structure of each part

XMP2-32R/T-E each part explanation



- | | | |
|---|--|--|
| <ul style="list-style-type: none"> 1 Display, touch screen 2 Power supply LED (normally light when power ON) 3 Number key (0-9) 4 When modify register data, reset the chosen area 5 Screen upwards key 6 Refer key (press the key, then jump to the appointed screen) 7 Write the modified data into register | <ul style="list-style-type: none"> 8 Back to system initial screen (you can set at your will) 9 Screen downwards key 10 Key-press cover 11 Function key F1-F6 12 Running program (with green LED) 13 Stop program (with red LED) 14 Alarm list key, can swiftly switch to alarm list screen | <ul style="list-style-type: none"> 15 Product label 16 PLC communication port 17 Download port/HMI slave device port 18 Input terminals 19 Output terminals 20 AC220V power supply input |
|---|--|--|

XMP-18/XP-18 each part explanation



- | | | |
|--|--|--|
| <ul style="list-style-type: none"> 1 Display, touch screen 2 Upwards key 3 Alarm key 4 Downwards key 5 Function key | <ul style="list-style-type: none"> 6 Communication/download port 7 24V power supply terminal 8 485 communication terminal 9 Output terminal 10 Input terminal | <ul style="list-style-type: none"> 11 BD board slot 12 Number key 13 Enter key 14 Set key 15 Escape key |
|--|--|--|

Performance & Electric Specification

Item	XMP Series			XP Series		
	XMP2-32R/T-E	XMP2-18R/18T/18RT	XMP3-18R/18T/18RT	XP3-18R/18RT	XP2-18R/18RT	XP1-18R/18T
PLC specifications						
Main units type	XC2	XC2	XC3	XC3	XC2	XC1
I/O points	16DI/16DO	10DI/8DO		10DI/8DO		
Output type	R: Relay T: Transistor	R: Relay T: Transistor RT: Mixed output (Note 1)		R: Relay RT: Mixed output (Note 1)		
HMI specifications						
Display type	256 true color TFT LCD	Blue LCD				
Screen attribute	Support touch function			Do not support touch function		
Screen size	480*234	192*64				
Using life	Above 50000 hours, 25°C, 24-hour running	Above 20000 hours, environment temperature 25°C, 24-hour running				
Contrast	Not adjustable	Adjust by the potentiometer				
Text setting	Simplified and traditional Chinese, English, Japanese, etc.	Simplified and traditional Chinese, English				
Character size	Any size	Any font Matrix font, vector font				
Panel key-press	26 key-presses, set the function freely					
Memory						
Screen	4MB FlashROM	64KB Flash ROM				
Data	256KB SRAM	4KB SRAM				
Interface						
Download port	RS-232(Note 2)	RS-232				
Communication port	RS-232/485(PLC)	RS-485				
Electric features						
Input voltage	AC220V	DC24V				
Voltage range		DC22~26V				
Current consumption	<150mA	<200mA				
Allowable power-off	Below 10ms (less than 1s in fact)					
Anti-voltage impulse	AC100V, 20mA, less than 1 minute					
Insulative resistance	More than 100MΩ, DC500V					
Environment						
Run temperature	0~50°C					
Storage temperature	-20~60°C					
Ambient humidity	10%RH~90%RH(No dew)					
Anti-interfere capability	Interfere voltage:1500Vp-p Pulse cycle:1μs Duration time:1minute					
Atmosphere	Non-corrosive gas					
Structure						
Protection structure	Accord with IP20					
Cooling method	Nature wind cooling					
External dimension	214.0*200.0*60.3	172.0*121.0*56.5				
Mouting dimension	201.0*187.0	164.0*113.0				

Note 1: In mixed output type, Y0~Y3 are transistor output. "-s" behind type stand for RS485& built-in time clock.

Note 2: RS-232 of download port used for downloading screen and program, RS-485 used for connecting panel and slave device.